

Stock Manager™ User Manual



© 1999-2002 TinyStocks B.V., All Rights Reserved.

Stock Manager for use with Pocket PC organizers

This manual, as well as the software described in it, is furnished under license and may only be used or copied in accordance with the terms of such license. The information in this manual is furnished for informational use only, is subject to change without notice, and should not be construed as a commitment by TinyStocks B.V. TinyStocks B.V. assumes no liability for any errors or inaccuracies that may appear in this book. Except as permitted by such license, no part of the publication may be reproduced, stored in a retrieval system, or transmitted, in any form or by any means without the prior written permission of TinyStocks.

Stock Manager and the TinyStocks logo are trademarks of TinyStocks B.V.

All other brands and product names may be trademarks or registered trademarks of their respective holders.

TinyStocks B.V. makes no warranties, express or implied, including without limitation the implied warranties of merchantability and fitness for a particular purpose, regarding the software. TinyStocks B.V. does not warrant, guarantee or make any representations regarding the use or the results of the use of the software in terms of its correctness, accuracy, reliability, currentness or otherwise. The entire risk as to the results and performance of the software is assumed by you. The exclusion of implied warranties is not permitted by some states. The above exclusion may not apply to you.

In no event will TinyStocks B.V., its directors, officers, employees or agents be liable to you for any consequential, incidental or indirect damages (including damages for loss of business profits, business interruption, loss of business information, and the like) arising out of the use or inability to use the software, even if TinyStocks B.V. has been advised of the possibility of such damages. Because some states do not allow the exclusion or limitation of liability for consequential or incidental damages, the above limitations may not apply to you.

For defense agencies: Restricted Rights Legend. Use, reproduction or disclosure is subject to restrictions set forth in subparagraph (c) (1) (ii) of the Rights in Technical Data and Computer Software clause at 252.227-7013.

For civilian agencies: Restricted Rights Legend. Use, reproduction or disclosure is subject to restrictions set forth in subparagraphs (a) through (d) of the commercial Computer Software Restricted Rights clause at 52.227-19. Unpublished rights reserved under the copyright laws of the United States.

1 – Introduction

Stock Manager is a powerful stock portfolio manager for the Pocket PC platform. The program helps you keep track of your current and sold stocks. You can also keep track of stocks that should only be watched (those that you do not own). Stock Manager provides many statistics on a stock-by-stock basis and for an entire portfolio.

Current stock prices are automatically downloaded from the Internet every time you synchronize your Pocket PC thanks to a clever ActiveSync provider. Updating of your portfolio can also be done directly from your Pocket PC if you have a modem, if you connect your Pocket PC to a mobile phone. After an Internet update the program lets you know by how much your total portfolio value has increased or decreased and visual indicators also show if individual stocks have gone up or down.

Getting started quickly:

It is easy to get started using Stock Manager right away:

- Install the program following the installation instructions - **section 2**.
- Launch Stock Manager on your Pocket PC device and tap on the "New" button. You will be taken to the stock info window where you can enter all the information regarding the new stock entry you are creating – **section 5**.
- Download the stock information from the Internet. – **section 10**.

2 - Installation

Stock Manager can be installed in just a couple of minutes. There is a graphical overview of the installation on the TinyStocks web site (<http://TinyStocks.com/howins.html>).

- Unzip the file StockManager.zip that you downloaded from the TinyStocks web site using a zip program (for example WinZip – <http://www.winzip.com>).
- Run the installation program StockManagerInstall.exe which was in the zip file.
- The Stock Manager program will be installed on your Pocket PC device and the Stock Manager ActiveSync provider on your desktop.
- If Stock Manager does not appear in the ActiveSync window, click on the ActiveSync "Options" button and select Stock Manager.
- Double-click on Stock Manager in the ActiveSync window and configure the different Stock Manager synchronization options. If you are on a corporate LAN you will have to click on the Network tab and enter your proxy settings. If you are not sure what these settings should be, it is best to ask your network administrator. More information in section 11.
- Run Stock Manager on your Pocket PC device, select "Register" from the "Tools" menu and enter your registration code.

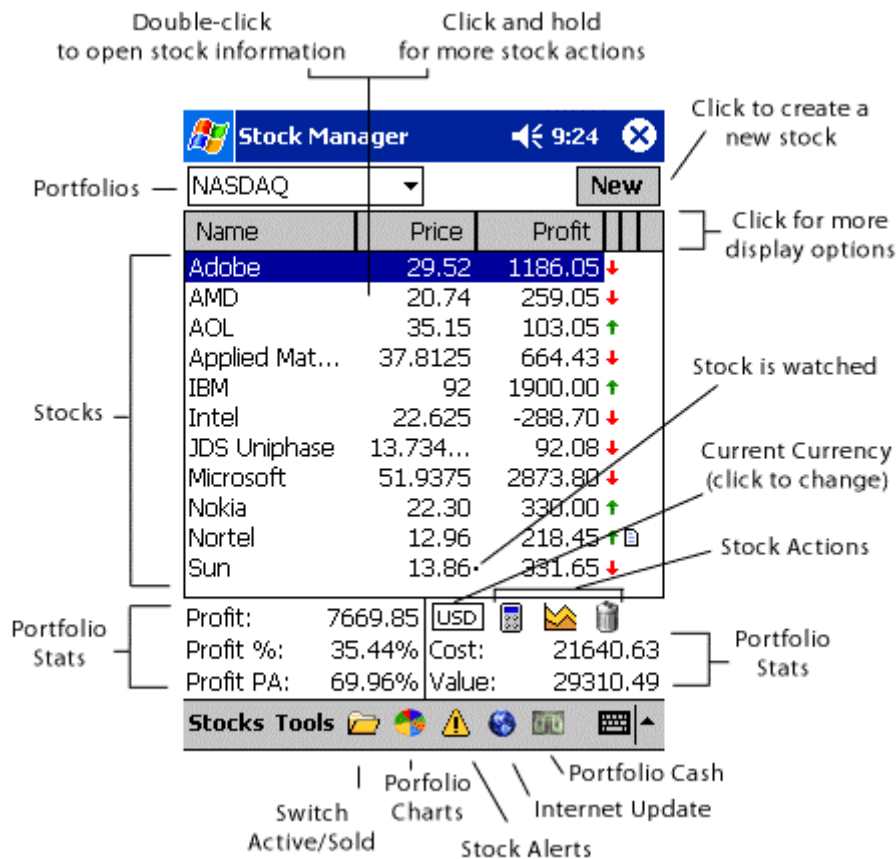
- From now on your portfolio will be up to date every time you synchronize your Pocket PC device!

3 - Main Screen

The main screen shows you all your stocks in the currently selected portfolio. Tap on the column headers to change what is displayed in that column.

The 4th column shows either: if the stock has gone up or down since the last Internet update or if the stock has gone up or down during the current trading day. What exactly is displayed depends on a configurable setting in the program preferences. Double-clicking on this icon brings up the market window for the corresponding stock.

The 5th column shows whether a particular stock has a note attached to it. Double-click on this column to open an existing note or to create a new note for the corresponding stock.



Watched stocks are displayed with a little dot beside their current price, like this: Sun 13.86 331.65 ↓ . A stock that is watched is a stock that you do not own but that you still want to have around to keep track of how it is doing. Watched stocks do not influence the totals at the bottom of the screen.

Double-click on a stock to open the stock windows.

Switch Active/Sold: Click on this icon to switch the view between active and closed stocks. Active stocks refer to all the stocks that you own or are watching. When a stock is sold it is moved to the closed section and is not updated anymore during an Internet update.

Portfolios: Stock Manager can track up to 32 portfolios for you. Change portfolios or create new portfolios by clicking on the portfolio popup.

Portfolio Stats: The statistics at the bottom of the screen are for the current portfolio. To see the statistics for all your securities select "All" from the portfolio popup.

Stock Actions: The 3 stock action icons act on the currently selected stock. The icons are (from left to right):

- **Calculator:** Displays the stock calculator screen for the selected stock.
- **Chart:** Displays the chart screen for the selected stock.
- **Delete:** Deletes the currently selected stock.

There are other stock actions available by clicking on a stock and holding the pen down for a couple of seconds. Current actions include:

- **Edit current stock price:** This action allows you to manually edit the current price of a stock. This is useful for stocks from stock exchanges not yet supported by Stock Manager. Stock Manager will update the price for all stocks that have the same symbol. Therefore even if a stock is always updated manually, it should still have a unique symbol. You can use dummy symbols such as XX01, XX02, etc.

Internet Update: Tapping on the big earth icon will display the following information:

- **Date and time of the last Internet update** (direct or via ActiveSync).
- **Profit change:** This value indicates by how much the current portfolio profit has changed since the last Internet update.
- **Profit change %:** The profit percent change of the current portfolio since the last Internet update.
- **Change today:** This value is calculated by adding all the stock change values multiplied by the number of shares owned in a particular stock. This is a good indicator to see portfolio activity on a daily basis and not since the last Internet update.
- **Change %:** This represents the change as a percentage with respect to the portfolio's current value.

Current Currency: Displays the currency in which the values from the 3rd column are displayed. Clicking on the currency button will toggle the display of the values between the portfolio currency and the global currency. If viewing "All" portfolios, values are shown only in the global currency. For more information see the section on currencies.

4 - Display Options

The three principal columns on the main screen can display different information about the stocks in your portfolio by tapping on the corresponding column header.

Column 1:

- Name: Displays the name given to the stock.
- Symbol: Displays the symbol of the stock.

Column 2:

- Price: The current price of the stock, either updated manually or from the Internet.
- Div.: Dividend, shows any dividend that the stock might have given. Dividends are used to calculate the profit.
- Num: Number of shares bought.
- Buy Date: When the shares were bought.
- Sell Date: When the stock was sold, useful only when viewing "closed" stocks.

Column 3:

- Profit: Current profit.
- Profit %: Current profit as a percentage.
- Profit PA: Profit per anum.
- Cost: Cost of the stock.
- C. Value: Current value of the stock.
- Fee %: Fee to buy the stock as a percentage of the cost.
- B. Price: Buy price of the stock.
- Change: How much the stock has changed in the current trading day (this value is displayed as received from the Internet and is not calculated).
- Change %: The change percentage for the current trading day.
- DChange: The amount change for the current trading day. This value is calculated by multiplying the stock change value by the number of shares owned in a particular stock.

Column 4:

- Change Today: the arrows show the change today
- Change Last Update: the arrows show the change in price since the last Internet update.

5 - Stock Windows

The stock windows provide information relating to the currently selected stock.

TIP: If you have selected the option **Map Arrows Keys in Program** in the program's preferences, then you can use your Pocket PC's hardware left, right, up and down buttons

to move between the different stock windows and different stocks in the current portfolio. This is a great way, for example, to review the latest market information of all your stocks!

Info

The info tab is used to specify the initial buying parameters of a stock. If you want to keep track of a stock that you do not own then leave the **Price per share**, **Number of shares** and **Fee** fields empty and uncheck the **Own** checkbox. Stocks that are not owned (i.e. stocks that are only watched) are not included in the portfolio statistics on the main screen.

Name: The name of the stock. This is only for your own reference therefore you can enter whatever you prefer.

Symbol: The symbol of the stock as it is found on the server used by Stock Manager. You should not enter the symbol you think is correct, instead check the online FAQ (<http://TinyStocks.com/faq.html>) to see what servers are used and look up the correct symbol.

* The symbol is also important because it allows Stock Manager to know which entries belong to the same stock. This is used in the stock calculator, the stock charts and the stock alerts. If you have a stock, which you have to update manually (because the exchange is not yet supported by Stock Manager), you should still give it a dummy symbol, for example XX01, XX02, etc and select "No Update" from the exchange popup. This will allow you to update the stock manually and still keep chart data for it.

You can also track the latest currency rates with Stock Manager. To do so, select "Currency" from the exchange popup and enter the currency name as two ISO currency code (<http://www.xe.net/ucc>). For example, entering "EURUSD" will track the rate of the Euro to the US Dollar while "USDCAD" will track the US Dollar to the Canadian Dollar.

To track an index, select "Index" from the exchange popup and enter the index symbol. You can find a list of all the indices in the FAQ.


The **Chart** checkbox indicates whether chart information should be saved for the current stock.

Short: If this purchase is a short then select this checkbox. The profit, profit % and profit pa will then be correctly calculated (negative if the stock price goes up and positive if it goes down).


The **Fee** field indicates how much was paid as a commission to buy the current stock. If your broker charges a percentage fee instead of a flat fee, then select the correct percentage value by tapping on the “?” symbol and the fee will automatically be calculated by Stock Manager.


You can track of dividends received for the stock by entering the amount in the **Dividend** field.

The 4 icons at the bottom help you manage your stock:

 Delete this stock.

 Sell this stock.

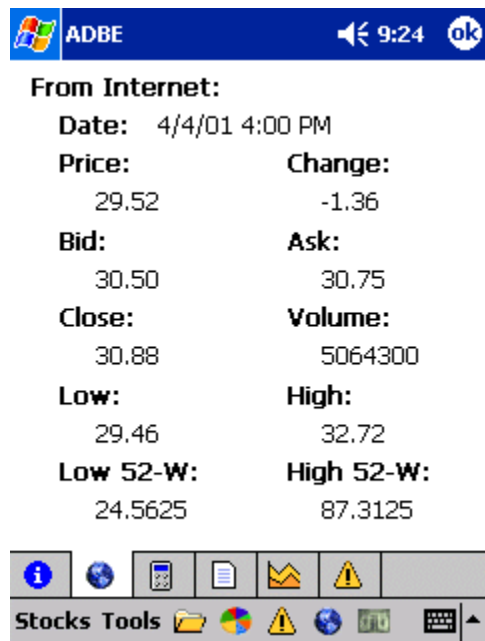
 Add more shares to this stock. When tracking certain items, such as mutual funds for example, for which more shares are purchased every month it is usually not interesting to keep these purchases as separate entries in Stock Manager. In which case click on the "Add more shares" button and enter the price, number of shares and fee for the new purchase. These values will be added (number and fee) and averaged (price) to the existing values of the entry.

 Create a new stock based on this stock. When purchasing more shares of a regular stock it is usually desirable to create a new stock entry so that the different purchases and their dates can be remembered. In this case choose this action. This will create a new stock entry (the same action as choosing New on the main screen) but it will also fill in the stock name and symbol for you.

Market

The market window displays all the information that is downloaded from the Internet for a particular stock. The information is displayed as it was downloaded and it is not calculated. Therefore the Change value reflects the amount by which a stock has changed since the last market close.

Some stock servers supported by Stock Manager do not support the downloading of all the fields in this window. Therefore it is possible that for some stocks, one or more value is blank.

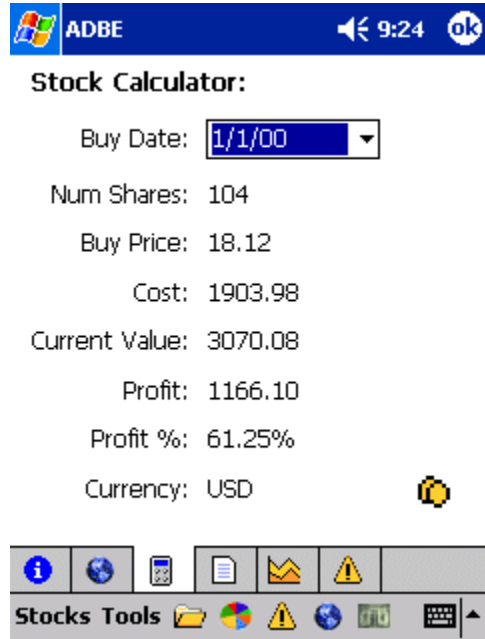


From Internet:	
Date:	4/4/01 4:00 PM
Price:	29.52
Change:	-1.36
Bid:	30.50
Ask:	30.75
Close:	30.88
Volume:	5064300
Low:	29.46
High:	32.72
Low 52-W:	24.5625
High 52-W:	87.3125

Stock Calculator

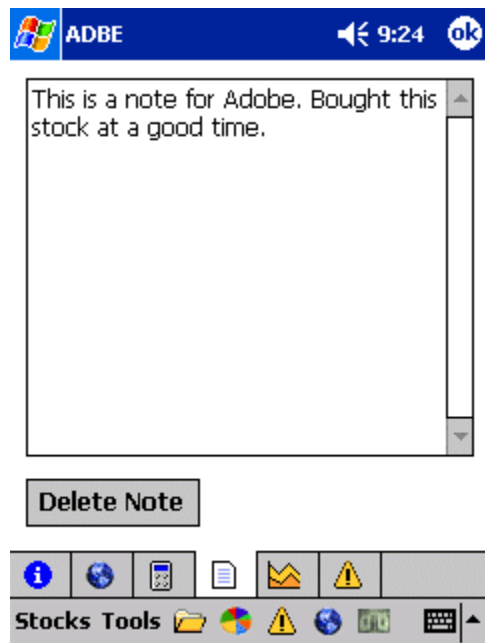
The stock calculator shows the combined statistics of all stock entries belonging to the same stock (two stock entries are deemed to be the same stock if they have the same stock symbol and same exchange). This is useful when several lots of the same stock have been purchased at different times. When selecting "All" from the "Buy Date" popup the window shows: total number of shares, average buy price, total cost and current value and average profit and profit %.

TIP: Tap on the currency icon to see the values in either the portfolio currency or the base currency.



Note


In the Note stock window it is possible to attach a note to a stock. Notes are useful to remember certain conditions surrounding the purchase of a particular stock.



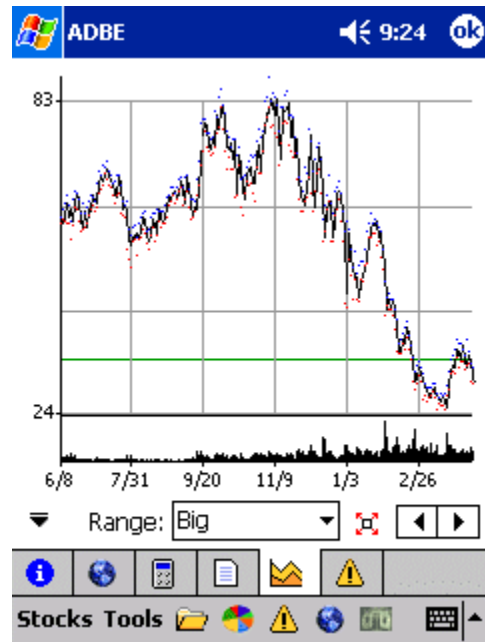
Chart

Everyday the price, high, low and volume of every stock is saved in a database and is then used to draw great looking stock charts.

Only one set of values is saved per day, it is up to the user to do an Internet update after market close to save the closing values for the day (or use the conduit to import historical chart data - see section 11). Chart data is saved for only those stocks that have the Chart checkbox checked in the info stock window.

 Click on this button to expand the chart window to full screen.

 This button will appear when the chart window is in full-screen mode. Click on this button to rotate the chart into landscape mode. NOTE: 3rd party utilities like GigaBar will still show up on top of the charts, this is not a Stock Manager problem.



Splitting a stock will also adjust the stock's chart. See section 12.

Clicking on the “?” button will display 3 menu options:

Add/Replace Entry: Allows you to enter new data into the chart database in case that an Internet update was not performed on a particular day. If the date entered in the Add/Replace dialog already exists in the chart database then the values entered will replace the existing values.

Delete Chart Range: Delete Chart Range: Deletes older chart data. This is useful if your Pocket PC device is running out of memory but you would still like to keep recent chart information.

Delete Chart Data: Delete Chart Data: Deletes all the chart data for the currently selected stock.

Min/Max for display range: If unselected, the chart is scaled between the maximum and the minimum value in the chart. If selected, the chart is scaled on a screen at-a-time basis. This is useful if a stock is near it's 52-week low.

TIP: Tap somewhere on the chart and move the stylus left and right to see the different closing prices at the bottom of the screen. Lift the stylus to see the particular values for the chosen day.

Note: When a stock is sold, the chart data is still available but is **not** updated anymore. You can either delete the stock data by selecting **Delete Chart Data** to conserve space on your Pocket PC. Or, if you still want to download daily chart info for the current stock,

then create a new watched stock for this stock. The existing chart data will be available to the new watched stock and will be updated during every Internet update.

Alert

In the **Alert** stock window it is possible to set any number of alerts for the current stock. Alerts can be set depending on the current stock price, daily change value, profit and profit %. Note that the profit and profit % alerts *do* take into account multiple lot purchases of the same stock!

To add a new alert set the alert type and value and press the **Add** button. To change an existing alert, select desired alert from the **Current alerts** list, change its parameters and click on the **Change** button.

More information about alerts is available in the section below.



Sell

The **Sell** stock window displays information regarding the sale of a particular stock. This window is only available for a stock that has been sold.



6 – Currencies

Stock Manager offers full support for currencies. Currencies are defined on a portfolio basis - so make sure that all stocks in a particular portfolio are based on the same currency.

The currency manager can be opened from the Tools menu.

To get started using currencies:

- Enter the 3-letter ISO code for your base currency (e.g. USD, EUR, CAD, GBP...) in the Base Currency field,
- and then all foreign currencies as they relate to the base currency in the list Defined currencies. When you adding a new currency, if you leave the currency exchange rate blank, then Stock Manager will automatically update it at the next Internet update.
- Then assign a currency to each portfolio on the top part of the currency manager window.

Base Currency:

Portfolio:

is in currency:

Defined currencies:

USD	2.481700
EUR	2.203710
CAD	1.595128

NOTE: It is important to enter the correct ISO code for a currency, otherwise Stock Manager will not be able to automatically download the latest currency exchange rates. You can find the correct currency ISO codes at the Universal Currency Converter page (<http://www.xe.net/ucc>).

The main Stock Manager window displays the current currency at the bottom of the screen, just above the portfolio statistics. Tapping on this currency icon will alternate the display of all values between the portfolio currency and the global currency. When viewing **All** portfolios together, all the statistics will be in the global currency.

The latest currency rates for all currencies defined in the currency manager are automatically downloaded during an Internet stock update.

Example

Suppose that your local currency is the Euro (EUR) and that you have a portfolio called Europe, which is in Euros (EUR), and another portfolio called US which is in US dollars (USD). Then you should do this:

- Enter the currency code EUR in the **Base Currency** field.
- Add a currency called USD and either enter the value of 1 USD to 1 EUR or leave the value at 0 - it will be updated at the next Internet update.

- On the top part of the currency screen, assign the Europe portfolio to EUR and the US portfolio to USD.
- If you did not enter the currency rates then do an Internet update so that the latest conversion rates are downloaded.
- From now on when you are viewing the portfolio called Europe you will see the values in Euros. And you can toggle looking at the US portfolio in either US dollars or Euros by tapping on the currency label at the bottom of the main screen. When viewing "All portfolios", the values will be in Euros.

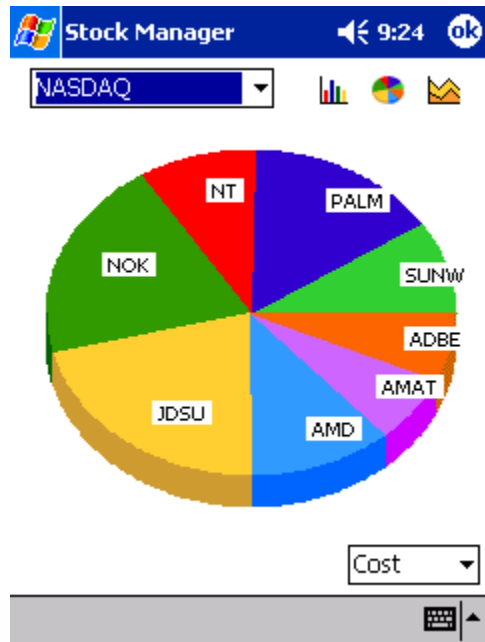
NOTE: It is very important to use the correct 3-letter ISO code otherwise Stock Manager will not be able to download the latest currency rates from the Internet. You can find a list of the standard 3-letter ISO currency codes at the Universal Currency Converter page.

7 - Portfolio Charts

Portfolio charts are a great way to see how your stock portfolio is doing! Quickly see how your money is distributed in your portfolio and winning and losing stocks.

All stock entries belonging to the same stock are combined into one chart entry (so make sure that all stock entries have the proper symbols - see section "Stock Window Info").

- **Bar chart:** great to see the cost/value/profit of a portfolio as absolute values.
- **Pie chart:** shows the cost/value/profit of all shares in a portfolio in relative terms, i.e. with respect to each other.
- **Line chart:** shows the cost/value/profit of a portfolio over time.



Clicking on the arrow button will display 4 menu options that allow you to manipulate the Line charts:

- **Add/Replace Entry:** Allows you to enter new data into the chart database in case that an Internet update was not performed on a particular day. If the date entered in the Add/Replace dialog already exists in the chart database then the values entered will replace the existing values.
- **Delete Chart Range:** Deletes older chart data. This is useful if your Pocket PC device is running out of memory but you would still like to keep recent chart information.
- **Delete Chart Data:** Deletes all the chart data for the currently selected portfolio.
- **Min/Max for display range:** If unselected, the chart is scaled between the maximum and the minimum value in the chart. If selected, the chart is scaled on a screen at-a-time basis.


Use the portfolio popup to see charts for the different portfolios.

Selecting the option **Use Stock Name in Charts** in the Stock Manager preferences will display the name of the stock instead of the symbol of the stock in the chart. See section 12.

TIP: Use the hardware up and down buttons to cycle through all your portfolios.

TIP: Tap somewhere on the line chart and move the stylus left and right to see the different values at the bottom of the screen.


8 – Portfolio Cash

Click on the portfolio cash icon () on the main screen to access the cash management function of Stock Manager. Enter the cash you have for the selected portfolio. This amount will be added to the current value portfolio statistic.

When a new stock is entered, the purchase value of the stock is deducted from the portfolio cash if there was a cash amount set for that portfolio (i.e.: if the cash for the portfolio was 0 then the purchased amount is not deducted, otherwise it is). When a stock is sold, the proceeds of the sale are added to the portfolio cash.

9 – Stock Alerts

Stock alerts are a great way to let Stock Manager keep track of stock movements for you. You can set any number of alerts for a particular stock based on the stock's price, daily change value, profit or profit %. Profit and profit % alerts even take into account multiple lot purchases of the same stock that you may have in your portfolio.

Alerts for each stock are set in the alert stock window for that stock (see section 5). You can see all alerts defined in Stock Manager by clicking on the alert icon () on the main screen.

Stock Manager checks for active alerts at these 3 times:

1. When starting Stock Manager.
2. After and Internet update.
3. When going into the main alert screen.

When there are active alerts, the alert icon changes to the active alert icon ().

10 - Internet Update

There are 2 ways to update your stocks with data from the Internet

- **ActiveSync:** Every time you press the **Sync** button in the ActiveSync window, your stocks are updated. For this you must install the Stock Manager ActiveSync provider by running the StockManagerInstall.exe program that is included in the zip file you can download from the TinyStocks web site (see section 2). If you are behind a firewall (like when on a corporate LAN) then you should enter your proxy settings in the Stock Manager provider. See section 11 on how to do this.

If you want Stock Manager to automatically update your stocks through your ActiveSync connection, see section 11.

- **Directly from your Pocket PC** with a modem, wireless modem, mobile phone (must be a mobile phone with a built-in data modem - consult your manufacturer), GPRS, network card, wireless network card, etc. Your Pocket PC must already be properly configured to connect to the Internet in order to do this.

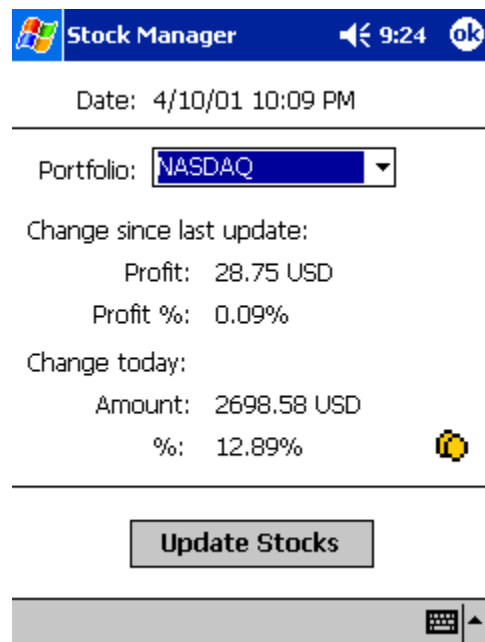
Open the **Tools** menu, select **Preferences** and then **Network**. If using a regular modem or a mobile phone, click on the option **Use Modem** and select your **Connection** profile. If using a wireless modem such as the OmniSky one, **UNCHECK Use Modem**.

If you want Stock Manager to automatically update your stocks through your direct connection, go to **Tools > Preferences > Network** and check the **Automatic Update** checkbox.

From now on, every time that you wish to update your stocks, select **Update Stocks** from the **Tools** menu and Stock Manager will connect to the server and downloads the latest stock prices.

After an Internet update, either via ActiveSync or directly from the Pocket PC, click on the big earth icon on the main screen (🌐) to display your latest profit statistics. The information displayed is for the current portfolio and is as follows:

- Date and time of the last Internet update.
- Profit: This value indicates by how much the current portfolio profit has changed since the last Internet update.
- Profit change %: The profit percent change of the current portfolio since the last Internet update.
- Change today: This value is calculated by adding all the stock change values multiplied by the number of shares owned in a particular stock. This is a good indicator to see portfolio activity on a daily basis and not since the last Internet update.
- Change %: The day's change with respect to the portfolio's current value



TIP: Click on the currency icon in the lower right corner of the window to toggle the display of the amounts between portfolio currency and global currency.



11 – ActiveSync provider

The Stock Manager ActiveSync provider is software that resides on your PC and gets called by ActiveSync when you synchronize your Pocket PC device. It is responsible for updating your portfolio with the latest prices from the Internet and for importing and exporting data into/from Stock Manager.

ActiveSync provides several synchronization options, which can be set by clicking on the **Options** button in the ActiveSync window and selecting the tab **Sync Mode**. We recommend that you set the synchronization to **Manually**. With this option set, your stock portfolio will be synchronized whenever you press the **Sync** button in the ActiveSync window.

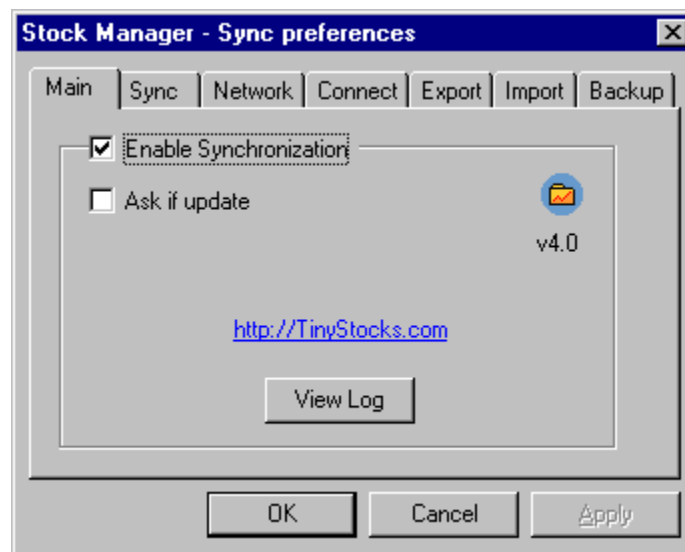
The Stock Manager provider can be disabled and enabled by clicking on the **Options** button in the ActiveSync window

To display the Stock Manager provider preferences: open the ActiveSync window and double-click on the Stock Manager icon.

Information Type	Status
 Favorite	Synchronized
 Stock Manager	1 item not synchronized

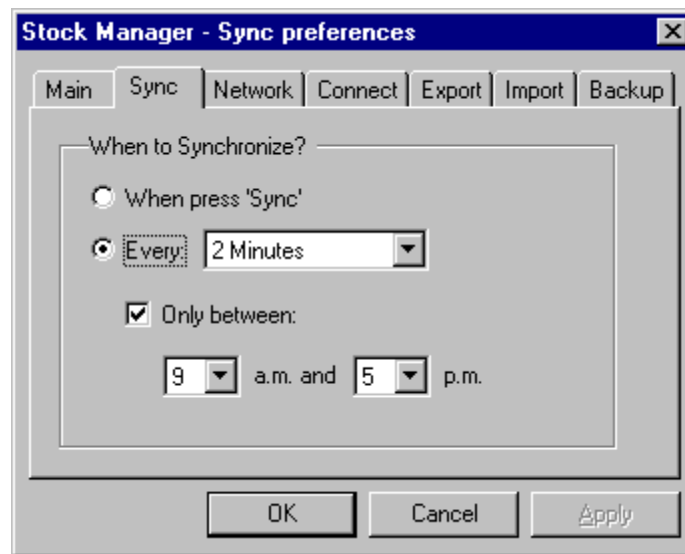
The following options can be configured:

Main



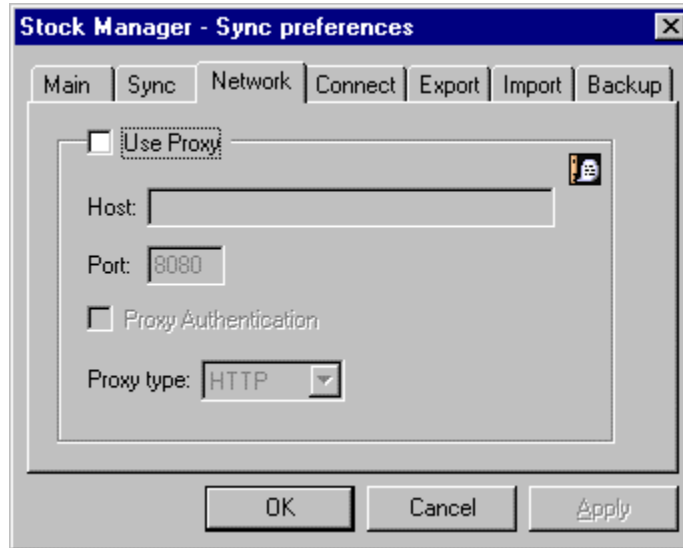
- **Enable Synchronization:** Enables or disables the Stock Manager ActiveSync provider.
- **Ask if update:** When this option is turned on, the Stock Manager provider will display a dialog box during each ActiveSync synchronization operation asking if your Pocket PC portfolio should be updated with the latest values from the Internet.
- **View Log:** Displays the log of the latest Internet update. This is useful for resolving synchronization problems. You should send this log to TinyStocks with any support requests.

Sync



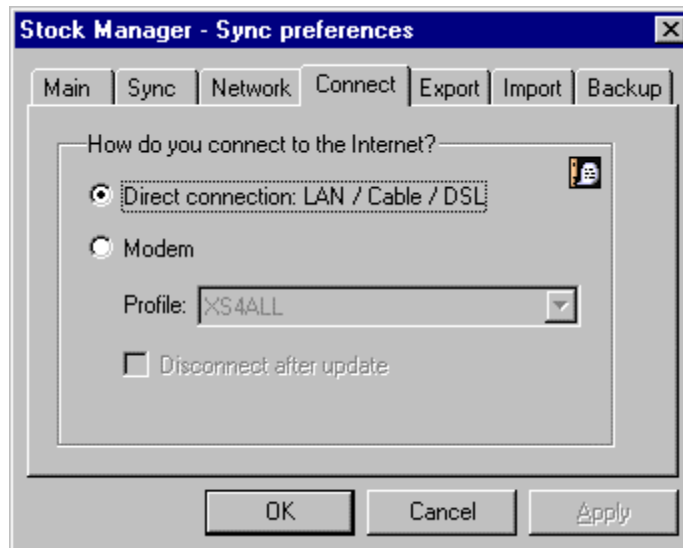
- **When press 'Sync':** Stock Manager will only synchronize your portfolio when you press the 'Sync' button in the ActiveSync window.
- **Every:** If you have set ActiveSync to synchronize continuously (click on the 'Options' button in the ActiveSync window and go to the 'Sync Mode' tab) then Stock Manager will synchronize your portfolio at every interval specified. This is a great feature if during work hours your Pocket PC device is in its cradle and turned on. You can then get "streaming" quotes onto your Pocket PC! (see disclaimer, all data is AT LEAST 15-20 minutes delayed).

Network



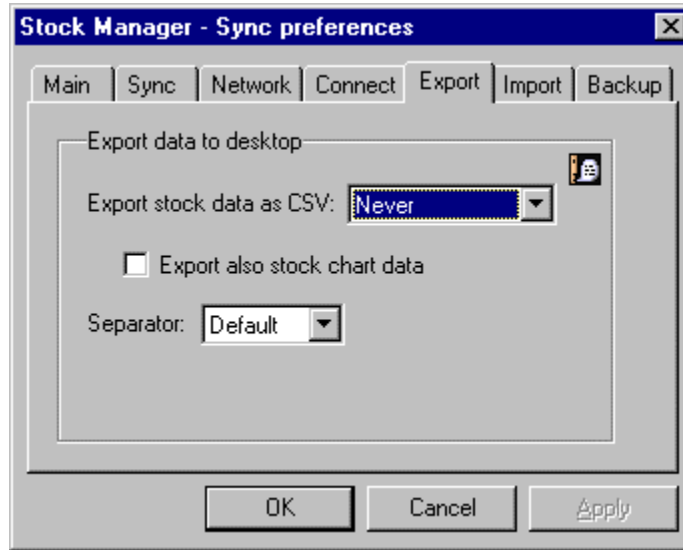
Use Proxy: If your computer is behind a firewall you should turn on this option and set your proxy Host and Port. If your proxy requires a username and password, turn on Proxy Authentication as well. The best way to find out what your proxy host and port are is to ask your network administrator. Note that the proxy host should be entered as proxy.mycompany.com and not as <http://proxy.mycompany.com>

Connect



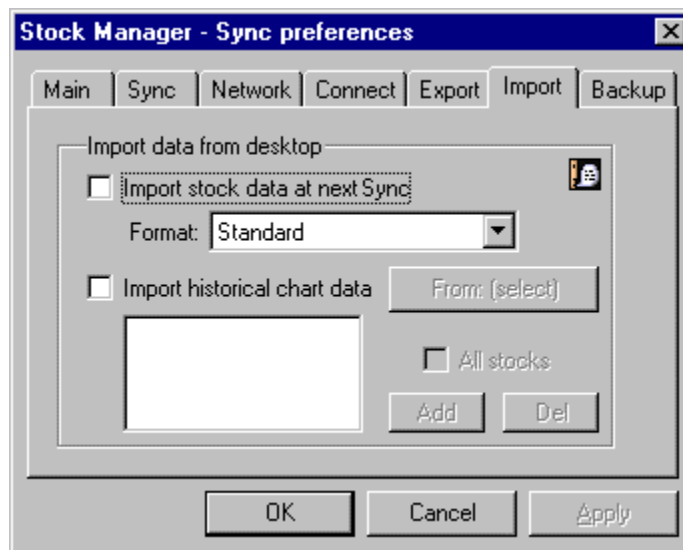
If you connect to the Internet via modem then the Stock Manager provider can automatically dial and hang up your Internet connection. For this you will have to have saved your ISP password in your dialup profile. Consult the Windows documentation.

Export



The Stock Manager conduit can export your Pocket PC portfolio to a CSV file that can be directly imported in any popular desktop spreadsheet program. To export your portfolio, select the desired export frequency from the Export data as CSV popup. The data will be exported to a file called *StockManager.csv* located where you installed the ActiveSync software. For example: *C:\Program Files\Microsoft ActiveSync\Stock Manager\StockManager.csv*.

Import



Stock data

Data can also be imported into Stock Manager. To import data, create a text file that contains one line per stock with all the proper values separated by commas according to the following format:

Name,Symbol,Category,Buy Date,Num Shares,Buy Rate,Buy Fee,Sell Date,Sell Rate,Sell Fee

Not all fields are required and default values will be used for fields that are left empty. Dates should be in one of the following formats:

MM/DD/YYYY
DD.MM.YYYY
YYYYMMDD

Example 1:

Adobe,ADBE
Microsoft,MSFT
AOL,AOL
Cisco,CSCO,NASDAQ,01/31/2000,10,100.0,19.95

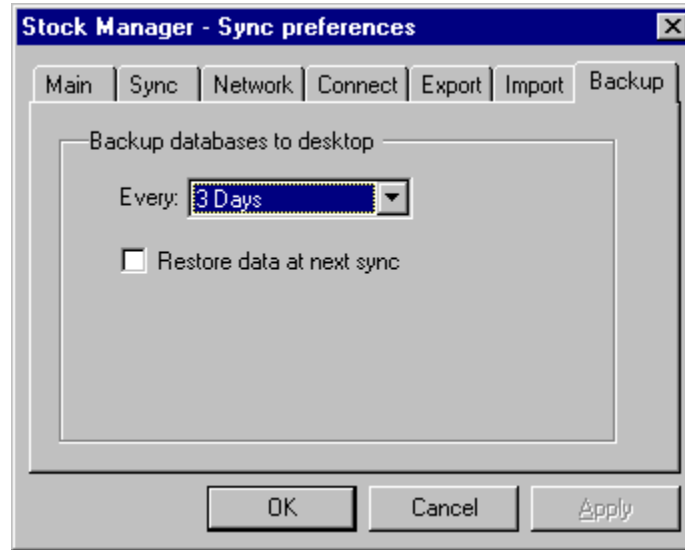
This will add the first 3 stocks as watched (because no buy date was specified) to the "Unfiled" category (no category was specified). The last stock will be added to the NASDAQ portfolio as an active stock with a purchase date of January 31st 2000, a buy price of \$100, 10 shares and a buy fee of \$19.95.

Chart data

To import historical stock data, enable this option, select a starting date and enter the stock symbols that should be updated or click on **All stocks** to download chart data for all your currently active stocks in Stock Manager.

NOTE: ONLY CHART DATA AVAILABLE ON THE YAHOO HISTORICAL SITE CAN BE UPDATED AT THIS TIME - at the moment this seems to be US, Canadian, Australian and some European stocks. If data for some of your stocks is not downloaded it means that this stock exchange is not currently supported.

Backup



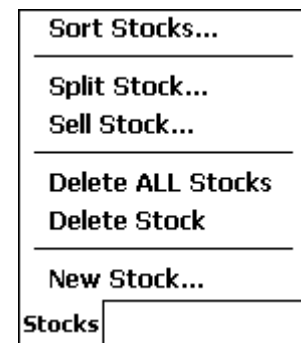
The Stock Manager provider can be set to automatically backup your data at each HotSync operation. This is handy should you delete some data by mistake, crash your PDA or just update to the latest Pocket PC version. To restore your data, check the restore checkbox and synchronize your device.

12 – Miscellaneous

The Stock Manager menus contain a lot of extra functionality that would be difficult to offer from the main screen.

Stocks Menu

- **New Stock:** Creates a new stock, same thing as tapping on the New button on the main screen.
- **Delete Stock:** Deletes the currently selected stock.
- **Delete All Stocks:** Deletes all stocks in Stock Manager.
- **Sell Stock:** Sells the currently selected stock.
- **Split Stock:** Splits the current stock and its chart data. To split a stock: Manually edit the stock that has to be splitted by clicking and holding on the desired stock until a menu appears, then select Edit Current Price and enter the price of the stock at the split date. Then select Split Stock from the Tools menu, enter the split date and the split ratio and tap on OK. Exact split prices and dates can be found on the Yahoo historical data page.
- **Sort Stocks:** Your stock portfolio can be sorted according to many different criteria.



Tools Menu

- **Update Stocks:** Performs a direct Internet stock update. See section 10 on the difference between a direct Internet stock update and a ActiveSync Internet update.
- **View Network Log:** Displays detailed information regarding the last direct Internet stock update.
- **Portfolios:** Opens the portfolio management window. Edit create and delete portfolios from this window.
- **Currencies:** Opens the Stock Manager currency manager.
- **Preferences:** Displays the Stock Manager preferences.
- **Register:** When you purchase the program, you will receive a registration code that has to be entered in this window.



Preferences

- **Enable Password Protection:** Stock Manager can be protected with a 4-digit PIN number. If you enable this feature, make sure that you remember your PIN number or you will not be able to launch Stock Manager.
- **Auto Sort:** When this feature is enabled, every time a new stock is added your portfolio is resorted in order to put the new stock in it's correct position. To set your sorting preferences, do a normal sort and these settings will be used during an auto sort.
- **Dividend is multiplied by rate:** In certain countries (such as Taiwan) the dividend is multiplied by the current rate. This option turns on this feature.
- **Use Stock Name in Charts:** If this option is selected, the name of a stock will be used to identify this stock in the portfolio charts. If this option is not selected then the symbol of the stock is used instead.
- **Map Arrow Keys in Program:** If this option is selected, your Pocket PC's hardware scroll buttons perform special functions in Stock Manager. Read the documentation to find out where this is useful (such as the stock windows).
- **Arrows show change today:** Determines whether the arrows on the main screen show the change during the current trading day (option selected) or the change since the last Internet update.
- **Integrate into Today Screen:** If you do not wish to use the Stock Manager Topday plugin, uncheck this option, close Stock Manager and do a soft-reset of your Pocket PC device. This will remove all traces of the Stock Manager Today plugin. To enable the Today feature again, check this option, close Stock Manager and soft-reset your device.

Network Settings

The network settings apply only to the direct Internet stock update method. See section 10 on the difference between a direct Internet stock update and a HotSync Internet stock update.

- **Use Proxy:** Uses the specified proxy to get onto the Internet.
- **Use Modem:** If you connect your Pocket PC to the Internet with a regular modem or mobile phone, the select this option and select your connection profile. If using a wireless modem such as the one from OmniSky, then unselect this option.
- **Connection:** Which RAS connection Stock Manager should dial to connect to the Internet.
- **Close connection after update:** Closes the connection after an update.